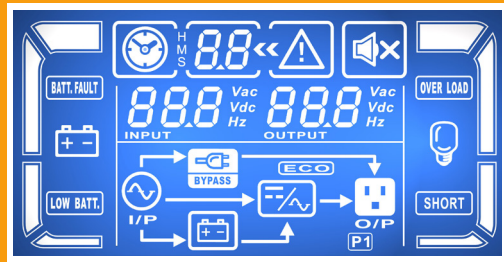


GI-Galleon



LCD Display Panel



• True double-conversion online UPS

A true double conversion UPS will provide clean, high level quality power to fully protect mission-critical devices such as sensitive networks, small computer centers, servers, telecom applications, as well as for industrial applications.

• Output power factor 0.8

Compared to the online UPSs in the current market, Galleon series provides better output power factor up to 0.8. It offers higher performance and efficiency for critical applications.

• Wide input voltage range (110V - 300V)

Galleon can still provide stable power to connected devices under unstable power environments.

• Programmable power management outlets

With programmable power management outlets, users can easily and independently control load segments. During power failure, this feature enables users to extend battery time to mission-critical devices by shutting down the non-critical devices.

Programmable Outlets (P1)
- connect to non-critical devices



• 50/60 Hz Frequency Converter Mode

Lock output frequency at 50Hz or 60Hz to suit power sensitive equipments.

• ECO mode operation for energy saving

Offers efficiency as high as 97% to cut energy usage & cost. UPS power application via static bypass, timely returning to online double conversion when the need arises.

• Emergency Power Off (EPO) Function

This feature can secure the personnel and equipment in case of fires or other emergencies.

• SNMP+USB+RS-232 multiple communications for 1-3K models

This feature allows either USB or RS-232 communication port to work with SNMP interface simultaneously.

• DSP technology applied for 6K and up models

A DSP controller provides an improved and cost-effective solution with high performance.

• Smart battery charger design to optimize battery performance

Galleon 1-3K series is equipped with 2-stage charger design to guarantee battery discharge time. Besides, it will adjust charging voltage according to outside temperature. This features will extend the useful service life of batteries.

Galleon 6K and up models also equipped with 3-stage extendable charger for optimized battery performance. This feature extends the useful service life of batteries and optimizes battery recharge time. Besides, the extendable charger design can be stacked in numbers for large-capacity battery charging.

• Maintenance bypass available for 6K and up models

Internal bypass assures continuous power to critical devices during UPS maintenance.

• Optional hot standby mode and N+X parallel redundancy available for 6K and up models

For genuinely redundant power protection, Galleon (6K and up models) can either be used in parallel operation with up to 3 units or hot standby mode. Slave UPS will back up the load in the event of critical component failure. It increases power safety and availability.

• Adjustable battery numbers for 6K and up models

Galleon 6K and up models can still maintain operation with only 18 or 19 internal batteries.

• Built-in isolation transformer (Option)

With built-in isolation transformer, the UPS will offer full isolation and complete common mode noise rejection for connected precious equipment. It become an ideal power source with 100% protection against unexpected AC power problems.



6K/10K(L) 6K 2K(L)/3K(L) 1K(L)/1.5K(L)

GI-Galleon 1KVA/1.5KVA/2KVA/3KVA/6KVA/10KVA Online UPS Selection Guide

MODEL		GI-Galleon 1K (L)	GI-Galleon 1.5K (L)	GI-Galleon 2K (L)	GI-Galleon 3K (L)	GI-GI-Galleon 6K (L)	GI-Galleon 10K (L)
PHASE		Single phase with ground					
CAPACITY		1000 VA/800 W	1500 VA/1200 W	2000 VA/1600 W	3000 VA/2400 W	6000 VA/4800 W	10000 VA/8000 W
INPUT							
Nominal Voltage		200/208/220/230/240 VAC or 100/110/115/120/127 VAC				208/220/230/240 VAC	
Voltage Range		110 - 300 VAC ± 5 % or 55 - 150 VAC ± 5 % (based on load at 60 % - 0)				176-300 VAC @ 100% load 110-300 VAC @ 50% load	
Frequency Range		40 Hz ~ 70 Hz				46 ~ 54 Hz or 56 ~ 64 Hz	
Power Factor		≥ 0.99 @ Nominal Voltage (100% Load)				≥ 0.99 @ 100% Load	
OUTPUT							
Output Voltage		200/208/220/230/240 VAC or 100/110/115/120/127 VAC				208/220/230/240 VAC	
AC Voltage Regulation (Batt. Mode)		± 1%				± 1%	
Frequency Range (Synchronized Range)		47~53 Hz or 57~63 Hz				46 ~ 54 Hz or 56 ~ 64 Hz	
Frequency Range (Batt. Mode)		50 Hz ± 0.25 Hz or 60Hz ± 0.3 Hz				50 Hz ± 0.1 Hz or 60 Hz ± 0.1 Hz	
Current Crest Ratio		3:1				3:1	
Harmonic Distortion		≤ 2 % THD (Linear Load) ≤ 4 % THD (Non-linear Load)				≤ 3 % THD (Linear Load) ≤ 6 % THD (Non-linear Load)	
Transfer Time	AC Mode to Batt. Mode	Zero					
	Inverter to Bypass	4 ms (Typical)				Zero	
Waveform (Batt. Mode)		Pure Sinewave					
EFFICIENCY							
AC Mode		87%		90%		89%	
Battery Mode		83%		87%		88%	
BATTERY							
Standard Model	Battery Type	12 V / 7 Ah	12 V / 9 Ah	12 V / 7 Ah	12 V / 9 Ah	12 V / 7 Ah	12 V / 9 Ah
	Numbers	3	3	6	6	20	20
	Typical Recharge Time	4 hours recover to 90% capacity				7 hours recover to 90% capacity	9 hours recover to 90% capacity
	Charging Current (max.)	1.0 A				1.0 A	
	Charging Voltage	41.0 VDC ± 1%		82.1 VDC ± 1%		273.0 VDC ± 1%	
Long-run Model	Battery Type	Depending on applications				Depending on applications	
	Numbers	3	3	6	6	18-20	
	Charging Current (max.)	8.0 A				4.0 A	
	Charging Voltage	41.0 VDC ± 1%		82.1 VDC ± 1%		273.0 VDC ± 1%	
INDICATORS							
LCD Display		UPS status, Load level, Battery level, Input/Output voltage, Discharge timer, and Fault conditions					
ALARM							
Battery Mode		Sounding every 4 seconds					
Low Battery		Sounding every second					
Overload		Sounding twice every second					
Fault		Continuously sounding					
PHYSICAL							
Standard Model	Dimension, DxWxH(mm)	397 x 145 x 220		421 x 190 x 318		592 x 250 x 576	
	Net Weight (kgs)	13	14	26	28	81	83
Long-run Model	Dimension, Dx W x H(mm)	397 x 145 x 220		421 x 190 x 318		592 x 250 x 576	
	Net Weight (kgs)	7	7	13	13	25	27
ENVIRONMENT							
Humidity		20-90 % RH @ 0- 40°C (Non-condensing)					
Noise Level		Less than 50dB@1Meter				Less than 55dB@1Meter	Less than 58dB@1Meter
MANAGEMENT							
Smart RS-232		Supports Windows® 2000/2003/XP/Vista/2008, Windows® 7/8, Linux, Unix, and MAC					
USB							
Optional SNMP							
		Power management from SNMP manager and web browser					

*Derate to 60% of capacity in Frequency converter mode and to 80% when the output voltage is adjusted to 100VAC,200VAC or 208 VAC.

** L means long-run model

GI-Galleon Tower Battery Pack (Optional built-in charger)

Capacity (VA)	1K/1.5K		2K/3K			
Battery Type	12 V 7 Ah	12 V 9 Ah	12 V 7 Ah	12 V 9 Ah	12 V 7 Ah	12 V 9 Ah
Battery Number	6pcs	6 pcs	12 pcs	12 pcs	18 pcs	18 pcs
Dimension (DxWxH) mm	397 X 145 X 220		421 X 190 X 318		535 X 190 X 318	
Net Weight (kgs)	18	20	36	40	55	61
Capacity (VA)	6K/10K					
Battery Type	12 V 7 Ah	12 V 9 Ah	12 V 7 Ah	12 V 9 Ah	12 V 7 Ah	12 V 9 Ah
Battery Number	40 pcs	40 pcs	60 pcs	60 pcs	80 pcs	80 pcs
Dimension (DxWxH) mm	592 X 250 X 576		830 X 250 X 576		815 x 250 x 826	
Net Weight (kgs)	109	125	166	190	210	242

* There are several battery options for GI-Galleon 2K/3K/6K/10K. Please select the battery pack for the detailed dimensions.

GI-Galleon Rackmount/Rack Tower (Option)



- True double-conversion
- Wide input voltage range (110-300 VAC)
- Input power factor correction 0.99
- Output power factor 0.8
- 50Hz/60Hz frequency converter mode
- Programmable power management outlets
- Emergency power off function (EPO)
- ECO mode operation for energy saving (ECO)
- SNMP+USB+RS-232 multiple communications
- Smart battery charger design for optimized battery performance
- Selectable output voltage via LCD panel
- Optional isolation transformer offers full isolation and complete common mode noise rejection
- Hot-swappable battery design (only available for 1-3K)

GI-Galleon Rackmount/Rack Tower Online UPS Selection Guide

MODEL		GI-Galleon RM-1K (L)		GI-Galleon RM-1.5K (L)		GI-Galleon RM-2K (L)		GI-Galleon RM-3K (L)		GI-Galleon 6KR (L)		GI-Galleon 10KR (L)			
PHASE		Single phase with ground													
CAPACITY		1000 VA / 800 W		1500 VA / 1200W		2000 VA / 1600 W		3000 VA / 2400 W		6000 VA / 4800 W		10000 VA / 8000 VA			
INPUT															
Nominal Voltage		110/115/120/127 VAC or 208/220/230/240VAC										208/220/230/240 VAC			
Voltage Range		50 - 150 VAC \pm 5 % or 110 - 300 VAC \pm 5 %										176-300 VAC @ 100% load 110-300 VAC @ 50% load			
Frequency Range		45Hz ~ 55 Hz or 56Hz ~ 65 Hz										46~54 Hz or 56~64 Hz			
Power Factor		\geq 0.99 @ Nominal Voltage (100% Load)										\geq 0.99 @ 100% load			
OUTPUT															
Output Voltage		110/115/120/127 VAC or 208/220/230/240 VAC										208/220/230/240 VAC			
AC Voltage Regulation (Batt. Mode)		\pm 1%										\pm 1%			
Frequency Range (Synchronized Range)		48 ~ 52 Hz or 58 ~ 62 Hz										46~54 Hz or 56~64 Hz			
Frequency Range (Batt. Mode)		50 Hz \pm 0.2 Hz or 60Hz \pm 0.2 Hz										50 Hz \pm 0.1 Hz or 60 Hz \pm 0.1 Hz			
Current Crest Ratio		3:1										3:1			
Harmonic Distortion		\leq 2 % THD (Linear Load), 8% max. (Batt. mode before shut down)										\leq 3 % THD (Linear Load) \leq 6 % THD (Non-linear Load)			
Transfer Time	AC Mode to Batt. Mode Inverter to Bypass	Zero 4 ms (Typical)										Zero			
Waveform (Batt. Mode)		Pure Sinewave													
EFFICIENCY															
AC Mode		86%				88%				89%					
Battery Mode		83%				85%				88%					
BATTERY															
Standard Model	Battery Type	12V/9Ah	12V/7Ah	12V/9Ah	12V/9Ah	12V/7Ah	12V/9Ah	12V/9Ah	12V/7Ah	12V/9Ah	12V/7Ah	12V/9Ah	12V/9Ah		
	Numbers	2	3*	3	4	6*	6	6	6	6	6	20	20		
	Typical Recharge Time	4 hours recover to 90% capacity										3 hours recover to 90% capacity		4 hours recover to 90% capacity	
	Charging Current (max.)	1.0 A												2.0 A	
Long-run Model	Charging Voltage	27.4 VDC \pm 1%	41.1 VDC \pm 1%	41.1 VDC \pm 1%	54.8 VDC \pm 1%	82.1 VDC \pm 1%	82.1 VDC \pm 1%	82.1 VDC \pm 1%	82.1 VDC \pm 1%	82.1 VDC \pm 1%	82.1 VDC \pm 1%	273 VDC \pm 1%	273 VDC \pm 1%		
	Battery Type	Depending on the capacity of external batteries										Depending on applications			
	Numbers	Depending on the capacity of external batteries										18-20			
	Charging Current (max.)	8.0 A										2.0 A			
Long-run Model	Charging Voltage	27.4 VDC \pm 1%	41.1 VDC \pm 1%	41.1 VDC \pm 1%	54.8 VDC \pm 1%	82.1 VDC \pm 1%	82.1 VDC \pm 1%	82.1 VDC \pm 1%	82.1 VDC \pm 1%	82.1 VDC \pm 1%	82.1 VDC \pm 1%	273.0 VDC \pm 1%	273.0 VDC \pm 1%		
	Net Weight (kgs)	9.1	11.3	10.7	11.3	14.6	14.8	14.8	14.8	14.8	14.8	17	20		
INDICATORS															
LCD Panel		UPS status, Load level, Battery level, Input/Output voltage, Discharge timer, and Fault conditions													
ALARM															
Battery Mode		Sounding every 4 seconds													
Low Battery		Sounding every second													
Overload		Sounding twice every second													
Fault		Continuously sounding													
PHYSICAL															
Standard Model	Dimension, D x W x H (mm)	380 x 438 x 88 [2U]	480 x 438 x 88 [2U]	480 x 438 x 88 [2U]	480 x 438 x 88 [2U]	600 x 438 x 88 [2U]	600 x 438 x 88 [2U]	600 x 438 x 88 [2U]	600 x 438 x 88 [2U]	600 x 438 x 88 [2U]	600 x 438 x 88 [2U]	UPS Unit : 580 x 438 x 133 [3U] Battery Pack : 580 x 438 x 133 [3U]	UPS Unit: 668 x 438 x 133 [3U] Battery Pack : 580 x 438 x 133 [3U]		
	Net Weight (kgs)	13.2	18.4	18.5	20.6	25.7	29	29	29	29	29	UPS Unit : 17 Battery Pack : 57	UPS Unit : 20 Battery Pack : 63		
Long-run Model	Dimension, D x W x H (mm)	380 x 438 x 88 [2U]	480 x 438 x 88 [2U]	480 x 438 x 88 [2U]	480 x 438 x 88 [2U]	600 x 438 x 88 [2U]	600 x 438 x 88 [2U]	600 x 438 x 88 [2U]	600 x 438 x 88 [2U]	600 x 438 x 88 [2U]	600 x 438 x 88 [2U]	580 x 438 x 133 [3U]	668 x 438 x 133 [3U]		
	Net Weight (kgs)	9.1	11.3	10.7	11.3	14.6	14.8	14.8	14.8	14.8	14.8	17	20		
ENVIRONMENT															
Humidity		20-90 % RH @ 0- 40°C (Non-condensing)													
Noise Level		Less than 50dB @ 1 Meter										Less than 55dBA @ 1 Meter		Less than 58dBA @ 1 Meter	
MANAGEMENT															
Smart RS-232/USB		Supports Windows® 2000/2003/XP/Vista/2008, Windows® 7/8, Linux, Unix, and MAC													
Optional SNMP		Power management from SNMP manager and web browser													

*In LV system, only 12V/7Ah x 3 for 1K model and 12V/7Ah x 6 for 2K model are available.

NOTE 1: Derate to 60% of capacity in CVCF mode and to 90% when the output voltage is adjusted to 208VAC.

NOTE 2: If the UPS is installed or used in a place where the altitude is above than 1000m, the output power must be derated one percent per 100m.

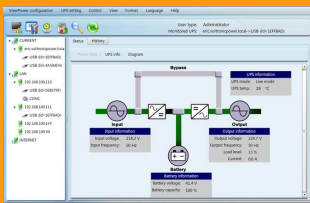
** L means long-run model

GI-Galleon Rack Battery Pack

Form Factor	2U				3U	
Capacity (VA)	1K	1K / 1.5K	2K	2K / 3K	6K/10K	
Battery Type	12 V / 9 Ah	12 V / 9 Ah	12 V / 9 Ah	12 V / 9 Ah	12 V / 7 Ah	12 V / 9 Ah
Battery Number	4 pcs	6 pcs	8 pcs	12 pcs	20 pcs	20 pcs
Dimension (DxWxH) mm	380 x 438 x 88		480 x 438 x 88	600 x 438 x 88	580 X 438 X 131	
Net Weight (kgs)	16.9	21.3	28.7	40.8	57	65

Software

ViewPower - UPS Management Software



- * Allows control and monitoring of multiple UPSs via LAN and INTERNET
- * User-friendly power analysis graphs
- * Real-time dynamic graphs of UPS data
- * Safely OS shutdown and protection from data loss during power failure
- * Warning notifications via audible alarm, broadcast, mobile messenger, and e-mail
- * Scheduled UPS on/off, battery test, programmable outlet control, and audible alarm control
- * Password security protection and remote access management
- * Supports multiple OS and local languages

Accessory

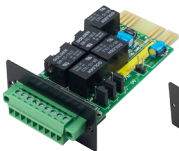
Remote Control Agent

SNMP Card

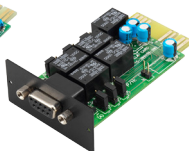


- * Allows control and monitoring of multiple UPSs through RJ-45 network connection
- * Real-time dynamic graphs of UPS data (voltage, frequency, load level, battery level)
- * Warning notifications via audible alarm, broadcast, mobile messenger, e-mail and SNMP traps
- * Historic data log stored in centralized PC database
- * Simple firmware upgrade with one click
- * Password security protection and remote access management
- * Supports optional environmental monitoring detector for temperature, humidity and smoke
- * 2-year product warranty

AS-400 Card



9-pin interface



RS-232 interface

- * Capable of selecting the status of the dry-contact signal by setting jumper to meet different application requirements.
- * Suitable applications: IBM Server, Personal PC & Workstations equipments, Auto-controlled industrial equipment & communication applications

Rackmount Slider

Simple installation for mounting Galleon Rack in your server rack enclosure.



PDU & Maintenance Bypass Switch



External Maintenance Bypass Switch



Automatic Transfer Switch (ATS)

